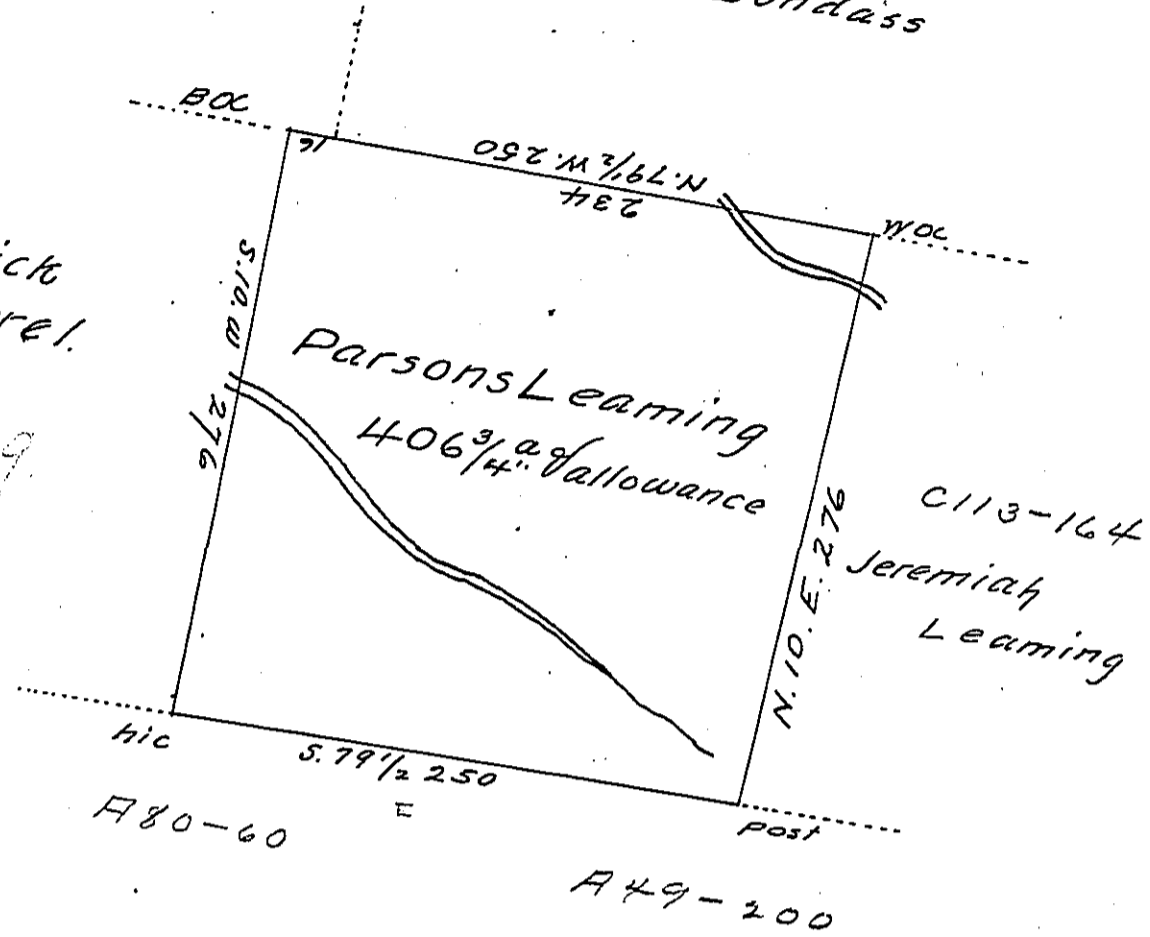


Joseph Nourse

James Dundass

Patrick Farrel

66-999



Survey'd to Parsons Learning on the 19<sup>th</sup> Nov<sup>r</sup> 1784 The above described Tract of four hundred & six acres & three quarters of an acre & allowance of six p Cent.

Situate on the Waters of Plumb Creek adjoining land survey'd to Patrick Farrel in Westmorland County.

By Warr<sup>t</sup> of the 1<sup>st</sup> July 1784 N<sup>o</sup> 13

Joshua Elder D.S.

John Lukens Esq<sup>r</sup> S. Gen<sup>l</sup>

IN TESTIMONY that the above is a copy of the original remaining on file in the Department of Internal Affairs of Pennsylvania, made conformably to an Act of Assembly approved the 16th day of February, 1833, I have hereunto set my Hand and caused the Seal of said Department to be affixed at Harrisburg, this ninth day of October 1905

*Loac R. Brown*  
Secretary of Internal Affairs.